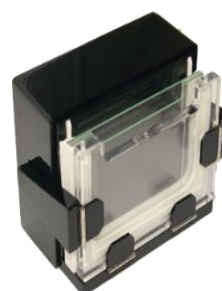


MONOKIN

Gel size: 8.5 (w) x 12 (l) cm

- ✓ **Single sided, runs one or two gels**
- ✓ **In-situ gel casting/ Casting stand**
- ✓ **Designed for effective gel cooling**
- ✓ **No sample loss due to uni-directional migration**

- ✓ **Gel thickness: 1/ 1.5 mm**
- ✓ **Wells per gel: 10/ 13**
- ✓ **Buffer requirement: 350 mL**
- ✓ **10% SDS-PAGE run in 1 hr 10 min**



Monokin with casting stand (left)

Features of this apparatus

Leak Proof

- Gaskets made of silicone are tough & resilient
- Leaks from plastic joints are prevented as sticking is done with specially manufactured glues
- Leak proof patent pending gel casting stand

Rugged

- Breakage proof Teflon combs, & fibre-glass notched plate
- Electrodes do not break as they are thick & purity > than 99.9%
- No corrosion due to resin filled male connectors

High Resolution

- Sharper bands because of thin glass plates & deep tank
- Good cooling as entire gel-sandwich is in contact with the buffer
- Low positioned electrodes stir buffer to cool gel

Error Minimization

- Migration of samples in wrong direction prevented due to unidirectional feature
- Wells formed straight as combs sit levelled with the spacers
- Run up to two gels at a time in the same system

Ready-to-use system includes

1. Lower anodic tank fitted with male connector and electrode
2. Cathodic electrode unit fitted with male connector and electrode
3. Resilient silicone gasket for cathodic electrode unit
4. One notched and one rectangular glass plate (square bottom)
5. One notched and one rectangular glass plate (rounded bottom)
6. Two 1.5 mm thick, breakage resistant, slotted spacers
7. Two 1.5 mm thick, breakage resistant, rounded spacers
8. One PTFE comb (1.5 mm thick, 10 wells, est. vol. 75 µL/well)
9. Set of clamps with screws
10. Gel-casting stand for variable gel thickness and number
11. C shaped rubber gasket for single gel of 1.5 mm
11. Agarose dispenser for filling slot in spacers
12. Gel-sandwich opener
13. Lid for safety
14. Electrical cords with male & female connectors
15. Instruction manual

	03-00182	03-00183	03-00184	03-00185
	<i>In situ casting/ Uni-directional migration</i>	<i>In situ casting/ Bi-directional migration</i>	<i>Casting stand/ Uni-directional migration</i>	<i>Casting stand/ Bi-directional migration</i>
	Y	Y	Y	Y
	Y	Y	Y	Y
	Y	Y	Y	Y
	Y	Y	-	-
	-	-	Y	Y
	Y	Y	-	-
	-	-	Y	Y
	Y	Y	Y	Y
	Y	Y	Y	Y
	Y	Y	Y	Y
	Y	Y	Y	Y
	Y	Y	Y	Y
	Y	Y	Y	Y

Ordering description

Monokin (03-00182): Vertical electrophoresis single sided system of gel size 8.5 (w) x 12 (l) cm, with male connectors, in situ gel casting, slotted spacers, uni-directional migration and capable of accepting two gels.

Monokin-BD (03-00184): Vertical electrophoresis single sided system of gel size 8.5 (w) x 12 (l) cm, with male connectors, in situ gel casting, slotted spacers, bi-directional migration and capable of accepting two gels.

Monokin with Casting stand (03-00183): Vertical electrophoresis single sided system of gel size 8.5 (w) x 12 (l) cm with male connectors, casting stand with 'C' shaped gasket for agarose free gel casting, rounded spacers, uni-directional migration and capable of accepting two gels.

SUGGESTION

Order along with ready-to-use system

A set of notched fibreglass plate, rectangular glass plate and gel detacher (03-29121), Gel-casting stand (03-33115), Glass plate stand (03-35085), Comb with 13 wells (03-14131/2)

Monokin-BD with Casting stand (03-00185): Vertical electrophoresis single sided system of gel size 8.5 (w) x 12 (l) cm, with male connectors, casting stand with 'C' shaped gasket for agarose free gel casting, rounded spacers, bi-directional migration and capable of accepting two gels.

Monokin and its spares and accessories

Item Description	Cat. No.	Unit
Monokin, ready-to-use system for uni-directional migration	03-00182	System
Monokin, ready-to-use system for uni-directional migration with casting stand	03-00184	System
Monokin-BD, ready-to-use system for bi-directional migration	03-00183	System
Monokin-BD, ready-to-use system for bi-directional migration with casting stand	03-00185	System
Clamps 13 (l) cm with screws (one pair)	03-05130	Set
Screws for clamps and cathodic electrode unit (two of each)	03-06148	Packet
Resilient silicone gasket with insert for cathodic electrode unit	03-09364	Piece
Comb 1 mm thick, PTFE, 10 wells, 15 mm deep, est. vol. 75 µL/well	03-14101	Piece
Comb 1.5 mm thick, PTFE, 10 wells, 15 mm deep, est. vol. 112 µL/well	03-14102	Piece
Comb 1 mm thick, PTFE, 13 wells, 15 mm deep, est. vol. 45 µL/well	03-14131	Piece
Comb 1.5 mm thick, PTFE, 13 wells, 15 mm deep, est. vol. 66 µL/well	03-14132	Piece
Spacers, slotted, 1 mm thick, breakage resistant (one pair)	03-17131	Set
Spacers, slotted, 1.5 mm thick, breakage resistant (one pair)	03-17132	Set
Spacers, plain, 1 mm thick, breakage resistant (one pair)	03-17083	Set
Spacers, plain, 1.5 mm thick, breakage resistant (one pair)	03-17084	Set
Notched and rectangular glass plates, square bottom edges, 12.5 (w) x 13 (l) cm (one of each)	03-28122	Set
Notched and rectangular glass plates, rounded bottom edges, 12.5 (w) x 13 (l) cm (one of each)	03-28123	Set
Rectangular glass plates, square bottom, 12.5 (w) x 13 (l) cm (two)	03-28132	Set
Rectangular glass plates, rounded bottom, 12.5 (w) x 13 (l) cm (two)	03-28133	Set
Notched fibreglass plate (breakage resistant), rectangular glass plate and gel detacher (one of each)	03-29121	Set
Notched fibreglass plate (breakage resistant), with rounded bottom, rectangular glass plate and gel detacher (one of each)	03-29122	Set
Gel-detacher for fibreglass plate	03-30105	Piece
Gel-casting stand with binder clips	03-33125	Piece
Gel-casting stand, for variable gel thickness and number, for agarose free sealing	03-33050	System
Gel-casting stand, for single gel, for agarose free sealing	03-33010	System
Gel-casting stand, for dual gel, for agarose free sealing	03-33020	System
C shaped rubber gasket (for single gel of 1 mm) for use with casting stand	03-33109	Piece
C shaped rubber gasket (for dual gel of 1 mm) for use with casting stand	03-33110	Piece
C shaped rubber gasket (for single gel of 1.5 mm) for use with casting stand	03-33111	Piece
C shaped rubber gasket (for dual gel of 1.5 mm) for use with casting stand	03-33112	Piece
Glass plate stand	03-35085	Piece
Gel-sandwich opener	61-30182	Piece
Agarose dispenser for filling slot in 1 mm spacer	62-36201	Piece
Agarose dispenser for filling slot in 1.5 mm spacer	62-36182	Piece
Electrical cords with male & female connectors designed for user safety	66-40124	Pair
Gradient mixer with triple-barrel and plunging stopper. Volume per chamber 14 mL. Accommodates magnetic spin-bar of ≤ 10 mm length	67-50167	Piece
Penta-legged levelling table (21 x 21 cm) with spirit-level	69-41219	Set
Monokin, CEU. Replacement part for single sided system of gel size 8.5 (w) x 12 (l) cm, with male connector	03-01182	Piece
Monokin-BD, CEU. Replacement part for single sided system of gel size 8.5 (w) x 12 (l) cm, with male connector	03-01183	Piece
Monokin, tank. Replacement part for single sided system of gel size 8.5 (w) x 12 (l) cm, with male connector	03-02182	Piece
Monokin-BD, tank. Replacement part for single sided system of gel size 8.5 (w) x 12 (l) cm, with male connector	03-02183	Piece